

MAY 2006**Branch Officers and
Directors for
2005/2006**President

Lamis Malak, P.E.
Dewberry
973-338-9100
lmalak@dewberry.com

President Elect

Kenneth Clausen, P.E.
KS Engineers, P.C.
(973) 623-2999
kclausen@kseng.com

Vice President

Thomas Ott, P.E.
PBQD
(973) 353-7628
OttT@pbworld.com

Secretary

Todd Hay P.E.
Pennoni Associates, Inc
(908) 653-0889 ext. 5529
THay@Pennoni.com

Treasurer

Dick Mehrman, P.E.
Consultant
201-634-9261

First Past President

Christopher J. Taylor, P.E.
SYSTRA Consulting, Inc.
973-893-6000
ctaylor@systrausa.com

Second Past President

Gareth Middleton, P.E.
Tishman Construction Corp.
973-824-7054
gmiddleton@tishman.com

Director

Stephan Butler, PE
The Stegla Group
(212) 431-3900
Sbutler@Stegla.com

Director

Mike Murno, P.E.
Edwards & Kelcey, Inc.
212-944-2000
mmurno@ekmail.com

**American Society of Civil Engineers**

The North Jersey Branch of the American Society of Civil Engineers

Requests the pleasure of your company at the

2006 Annual Awards Dinner

To be held on

Thursday, May 11, 2006

Social Hour begins at 5:30 PM

Civil Engineer of the Year – H. Ali Vaezi, P.E. - Dewberry

Government Engineer of the Year – John Duffy, PE, Director of Engineering, NJSEA

Young Engineer of the Year – Teresa Peterson P.E. - Dewberry

Service to the People—Senator Paul Sarlo, P.E. New Jersey State Assembly

Educator of the Year – Dr. Walter Konon, PE, NJIT CE Department Head

Journalism Award, Aileen Cho, Transportation Editor, ENR

President's Award – Parsons Brinckerhoff

Student Scholarships and Merit Awards

Induction of ASCE Life Members

Holiday INN - Totowa

1 Route 46 West, Totowa, New Jersey

For Directions Call 973-765-9000 or visit www.holiday-inn.com/totowanj

Cost: \$65 Government Employees: \$55 Full Time Students: \$30.

Tables of Ten: \$600

RSVP by May 9, 2006

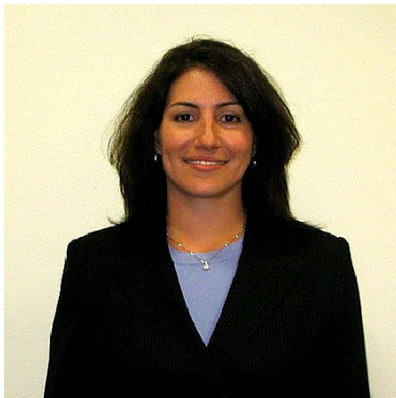
On-line at <http://branches.asce.org/northjersey>

or contact

Kenneth A. Clausen, P.E.

Email: kclausen@kseng.com

Tel: 973-623-2999

PRESIDENT'S ADDRESS

Summer is on its way bringing us to our final Newsletter of the 2005-2006 season and the North Jersey Branch Annual Awards dinner. This year the dinner will be held on May 11, 2006 at the Holiday Inn of Totowa. At this social event, we will honor individual achievements, present the scholarship winners and induct the new Branch Board. Save the date and join us for the celebration. Congratulations go out to the Award winners and the scholarship recipients!

The North Jersey Branch has had another successful year due in great part to the enthusiasm and effort of the Branch Board, its committees and the Branch Technical Groups. The Branch membership has truly shown their support and effort too. This past year brought with it the new Governance, the Outstanding Large Branch Award, the revitalized Construction Technical Group and a fully staffed Younger Member Group Board of Directors. I am very happy to have been a part of the work that was done in this Branch over the past year, from the field trips to the Technical Seminars.

Our Branch will continue its efforts all summer long with Summer Institute at NJIT, Younger Member Group outings, field trips and the Softball Tournament in September. We will keep you posted by e-mail and at the website.

My best wishes go out to incoming President, Ken Clausen, for a successful year ahead. Congratulations to our newest Board member Sandra Pardini and good luck to our outgoing Treasurer, Richard Mehrman, for his dedication to the North Jersey Branch for the past 10 years. You will be missed.

Finally, let me take this one last time to thank the membership for allowing me this opportunity and their continued support of the North Jersey Branch. Have a great summer!

Scholarship and Student Award Winners for 2006

The following scholarships and awards will be presented at the Branch Awards Dinner on May 11th.

\$1500 College Scholarships

Kiley Rode—Stevens Institute of Technology
 Anthony Massari — New Jersey Institute of Technology

\$1000 High School Scholarships

Laura Martin — Glen-Ridge High School
 David Kinskey-Lebeda Parsippany Hills High School

AMF Award

Danielle Stoner- Stevens Institute of Technology
 Brian Felber – New Jersey Institute of Technology

Ridgeway Award

Gina Joyce – Stevens Institute of Technology
 Britain Materek - New Jersey Institute of Technology

2006-2007

ASCE North Jersey Branch

Executive Board



Please join us in welcoming our new Board of Directors for the coming year. They will be putting forth another slate of interesting programs and exciting events and will continue to keep our Branch at the forefront of our **region**.

President:	Kenneth Clausen, P.E. of KS Engineers
President-Elect:	Thomas Ott, P.E. of Parsons Brinckerhoff
Vice-President:	Stephan Butler of Stegla Group
Secretary:	Sandra Pardini, of Parsons Brinckerhoff
Treasurer:	Todd Hay, P.E. of Pennoni Associates
Branch Director:	Michael Murno, P.E. of Edwards & Kelcey
Branch Director:	Gareth Middleton, P.E., of Tishman Corp.

Good luck to our dedicated members and also our past officers for their continued support to the Board and Branch. We had an exciting and successful year. Special thanks go to **Lamis Malak, PE**, the outgoing President, who will continue serving the ASCE North Jersey Branch in her new role as the North Jersey Branch First Past President in the coming year. Job well done, Lamis.

A very special thanks to **Richard Mehrman, P.E.** who has served for 10 years as our Branch Treasurer and is moving into retirement. Dick has kept the Branch in fiscally sound and our bills paid. We wish Dick all the best in his retirement.

Please consider attending the **Annual Awards Dinner on May 11, 2006** where you can meet your new Board Members and find out how you too can become an integral part of our local ASCE governing body. See you there!

WHAT IS THE ORDER OF THE ENGINEER?

The Order of the Engineer is the group of engineers who have publicly and privately recognized their duty to the public and to their profession. Order members understand the significance of the public trust bestowed upon them to perform their roles to the highest morale, ethical, and technical standards. The Order was initiated in the United States to foster a spirit of pride, individual integrity, and responsibility in the engineering profession. It bridges the gap between training and practice and presents to the public a visible symbol of our dedication. The first induction ceremony was held in 1970 at Cleveland State University, though the origins of the organization may be traced to the Canadian "Ritual of the Calling of an Engineer" dating back to 1926.



The Obligation is the formal statement of an engineer's responsibilities to the public and to the profession, publicly accepted by the engineer during the induction ceremony. Upon acceptance of the Obligation, new members receive a stainless steel ring to wear on the fifth finger of the working hand. This ring identifies them to other members of the Order and to the public at large.

Nationally, ASCE is encouraging membership in the Order for all of its members. The North Jersey Branch is planning to hold another induction at our Annual Awards Dinner on May 11. The induction is tentatively scheduled for 6:00 p.m., before the dinner, so come early and bring \$15 for the ring. ALL ENGINEERS are invited to attend. For more information, contact Teresa Peterson at tpeterson@dewberry.com.

CAREER DAY VOLUNTEERS NEEDED

This is your last chance! The Newark Public School system is holding a career day and are still seeking volunteers. Volunteers are needed to make a short presentation on the field of Civil Engineering followed by a hands-on activity. The North Jersey Branch will supply materials. If you are interested in participating, please contact Lamis Malak at lmalak@dewberry.com or 973-338-9100.

Newark Public School date:

May 19, 2006

Ann Street School
Time: 8:30 am to 12 Noon

Creative Solutions for Client Success



299 Cherry Hill Road
Parsippany, NJ 07054
Tel.: 973.263.3900
HaleyAldrich.com

- Subsurface Investigations
- Geotechnical Engineering
- Tunnel Design & Construction Management
- Remedial Investigations, Design and Construction
- Directional Drilling Design & Construction
- Environmental Management, Health & Safety

NORTH JERSEY BRANCH TECHNICAL GROUPS

Join one of these groups and get involved with others in your field. For more information, contact one of the Group leaders listed below.

STRUCTURAL GROUP

Arjuna Ranasinghe – 732-692-1800
apranasinghe@mccormicktaylor.com

TRANSPORTATION GROUP

Sandra Pardini - 973-353-7665
Pardini@PBWorld.com

WATER RESOURCES GROUP

Ramesh Rajagopal 908-755-0040
rrajagopal@Gfnet.com

ENVIRONMENTAL GROUP

Jim Heeren - 973-739-9400
Jheeren@dewberry.com

PROFESSIONAL ISSUES GROUP

Ronald Gumann – 201-595-4890
rgumann@panynj.gov

CONSTRUCTION GROUP

Co- Chairs:
Katy Ubinger - 973-667-1600
Ext.112
kubinger@crsgroup.com and
Stephen Denes - 201-307-2548
sdenes@hertz.com

GEOTECHNICAL GROUP

Co- Chairs:
Jay Meegoda – 973-596-2464
meegoda@njit.edu and
David Lim – 212-608-6600
dlim@hudsonmeridien.com

NEW LIFE MEMBERS TO BE RECOGNIZED AT AWARDS DINNER

The following members of the North Jersey Branch have attained the status of ASCE Life member over the past year and have been invited to the Awards Dinner on May 11. Life Membership recognizes long term membership in ASCE and confers future membership with dues being optional.

- | | |
|------------------------|------------------------|
| Mr. C. Roderick Black | Mr. Cheng-Nan Weng |
| Mr. Rainer Zimmermann | Prof. Ira Kuperstein |
| Mr. William St. Pierre | Prof. Dorairaja Raghu |
| Mr. Andrew Pacucci | Mr. Michael Ying |
| Mr. Philip Falcone | Mr. Devidas Tahiliani |
| Dr. Cheng-Tzu Hsu | Mr. Gambhirsin Solanki |
| Mr. Thomas Gill | Mr. Richard Plambeck |
| Mr. Rene Alexandru | Mr. Robert Alperstein |
| Dr. Hormoz Pazwash | Mr. Melvin Stein |
| Dr. Dominic DiToro | Mr. Richard Russ |
| Mr. Mysore Nagaraja | Mr. Jerome Yates |



PARSONS BRINCKERHOFF

Engineering • Program Management
Planning • Construction Management

506 Carnegie Center 2 nd Floor Princeton, NJ 08540 609-734-7000 Richard T. Fisher	Two Gateway Center 18 th Floor Newark, NJ 07102 973-353-9100 Gregory J. Soriano
--	--

For career opportunities in transportation planning, design and construction phase services, please visit www.pbworld.com



Engineers
Surveyors
Construction Managers

New Jersey
New York
Pennsylvania

- Building Structural Design & Inspection
- Construction Management & Inspection
- Geotechnical Engineering
- Site / Civil Engineering
- Traffic Engineering
- Bridge Inspection
- Bridge Design
- Highway Design
- Railroad Engineering
- Surveying Services

KS Engineers, P.C.
Corporate Headquarters
24 Commerce St. • Newark, NJ 07102
T: 973.623.2999 • F: 973.242.2955
info@kseng.com
www.kseng.com

YOUNGER MEMBER GROUP ELECTS NEW BOARD

During the past year the Younger Member Group was very ably led by Teresa Peterson as President and Chris Coke, Scott Lubarsky and Shawn Savage as Advisors. Many thanks to them for their dedicated service. For the 2006-2007 year a whole new slate of officers has been formed and we welcome:

President – Chrissa Roessner, Louis Berger

Vice President – Helen Shyu, HNTB Corp.

Treasurer – Craig Peterson, Langan Eng.

Secretary – Edgardo Perez, Louis Berger

We look forward to an exciting year under new leadership. Check your email for announcements of summer activities. To become a member of the YMG listserv and receive future announcements, please send an email to eperez@louisberger.com.

ENGINEERING EXPO REACHES TEENS

T H A N K Y O U – to all who came out for the EXPO! Over 80 engineering firms, professional societies, and college programs manned booths at the EXPO on April 2. Some 250 teens and their parents stopped out to learn more about engineering and engineers. Students learned about the engineering behind designing a softball field, producing drinking water, and designing temporary platforms for concerts and movies. All disciplines of engineering were represented through the participation of the professional societies including ASCE, NSPE, IEEE, SWE, SAME, and ASME among others.

Next year's event will be held at Westchester Community College. We look forward to seeing you there! Remember – today's student is tomorrow's engineer.



Teresa Peterson and Jill Comick with display

THE STRUCTURES TECHNICAL GROUP SEMINAR

“Sustainability in Structural Design”

The seminar was held at the New Jersey Institute of Technology, Newark, New Jersey on Thursday, April 6, 2006. Dr. Walter Konon, Chairperson of the Department of Civil & Environmental Engineering welcomed the attendees. The speakers were Ron Wilkinson of USGBC NJ, Scott Chrisner, PE of Buro Happold, NYC, and William Bobenhausen, Professor of Architecture, at NJIT.

55 people attended the seminar. Interestingly, 45 of the attendees were NJIT students and many of them in Architecture. Perhaps our ASCE membership has not recognized the relevance of Sustainability to their work. While it is true that there is a greater relevance to HVAC/MEP design than to structural design, there is relevance to all design fields. The National Society of Professional Engineers has made it a tenet of their Standard of Ethics for all engineers to strive for sustainability in their designs. The incoming national ASCE President has made it a priority of his term of office to increase awareness of the sustainability issue.

A buffet lunch was provided and 3.0 PDH hours were awarded to the attendees.

SAVE THE DATE 2006 SOFTBALL TOURNAMENT

The popular and hotly contested softball tournament sponsored by the Younger member Group is scheduled for September 9, 2006. Proceeds of the tournaments support the scholarships that the branch awards each year.

CALLING YOUNG NJIT ALUMNS

A night at Riverfront Stadium is planned. To include

- a barbeque from 6 to 8 pm.
- a baseball game -Bears vs. Road Warriors
- fireworks after the game

Cost: \$20 per adult, \$10 per child over 3.

Contact Alumni relations office at (973) 596-3441 or www.njit.edu/alumni/events.php.

Dewberry

Civil ♦ Transportation ♦ Traffic ♦ Structural ♦ Geotechnical
 Municipal ♦ Telecommunications ♦ Environmental
 Water Resources ♦ Building Structures ♦ Construction Inspection

Dewberry-Goodkind, Inc.
 200 Broadacres Drive ♦ Bloomfield, NJ 07003 ♦ 973.338.9100
 600 Parsippany Road ♦ Parsippany, NJ 07054 ♦ 973.739.9400
 133 Gaither Drive, Suite T ♦ Mt. Laurel, NJ 08054 ♦ 856.802.0843

www.dewberry.com

HAYWARD BAKER
 Geotechnical Construction

♦ FOUNDATION SUPPORT
 ♦ SETTLEMENT CONTROL
 ♦ UNDERPINNING
 ♦ GROUNDWATER CONTAINMENT
 ♦ EXCAVATION STABILIZATION

COMPLETE GROUND MODIFICATION
 SOLUTIONS AND SERVICES

Greg Simmons
 Business Development
 Northeast Regional Office
800-888-4292

New York Metropolitan Area
201-797-1985

For a complete listing of offices, visit
HaywardBaker.com

SPECIALTY
 FOUNDATION
 CONTRACTOR

SYS TRA SYSTRA Consulting

Always Moving

- Planning/Alternatives Analysis
- Busways and Alignments
- Systems Engineering
- Facility Design
- Signals & Communications Design
- Operations Analysis
- Construction Management

1515 Broad St., Bloomfield, NJ 07003 | 973.893.6000
 www.systraconsulting.com

Edwards AND Kelcey

ENGINEERS
 ARCHITECTS
 PLANNERS
 CONSTRUCTORS

TRANSPORTATION
 COMMUNICATIONS
 UTILITIES
 INSTITUTIONAL/COMMERCIAL
 FEDERAL
 PLANNING/ENVIRONMENTAL

www.ekcorp.com

REAL WORLD CHALLENGES...
 ...REAL WORLD SOLUTIONS

Offices Nationwide

299 Madison Avenue, PO Box 1936
 Morristown, NJ 07962
 Voice: 973.267.0555
 Fax: 973.267.3555



American Society of Civil Engineers
North Jersey Branch
 Kenneth A. Clausen, P.E., Editor
 KS Engineers, P.C.
 24 Commerce Street, 15th Floor
 Newark, NJ 07102
 (973) 623-2999

UPCOMING EVENTS

May 5: NJ Section Awards
 Dinner, Woodbridge Hilton,
 Woodbridge, NJ

May 11: North Jersey Branch
 Awards Dinner, Holiday Inn,
 Route 46, Totowa, NJ

May 19: Career Day, Ann
 Street School, Newark, NJ