

APRIL 2006**Branch Officers and
Directors for
2005/2006**President

Lamis Malak, P.E.
Dewberry
973-338-9100
lmalak@dewberry.com

President Elect

Kenneth Clausen, P.E.
KS Engineers, P.C.
(973) 623-2999
kclausen@kseng.com

Vice President

Thomas Ott, P.E.
PBQD
(973) 353-7628
OttT@pbworld.com

Secretary

Todd Hay P.E.
Pennoni Associates, Inc
(908) 653-0889 ext. 5529
THay@Pennoni.com

Treasurer

Dick Mehrman, P.E.
Consultant
201-634-9261

First Past President

Christopher J. Taylor, P.E.
SYSTRA Consulting, Inc.
973-893-6000
ctaylor@systrausa.com

Second Past President

Gareth Middleton, P.E.
Tishman Construction Corp.
973-824-7054
gmiddleton@tishman.com

Director

Stephan Butler, PE
The Stegla Group
(212) 431-3900
Sbutler@Stegla.com

Director

Mike Murno, P.E.
Edwards & Kelcey, Inc.
212-944-2000
mmurno@ekmail.com



American Society of Civil Engineers

**North Jersey Branch
Environmental & Water Resources Technical Group
Presents**

**NONSTRUCTURAL STORMWATER
MANAGEMENT STRATEGIES
POINT SYSTEM**

By

Sandra Blick, NJDEP Division of Watershed Management

The presentation will provide a summary discussion of nonstructural stormwater management strategies and how they can be implemented on a project.

Speaker: **Sandra** Blick is with the Bureau of Environmental Analysis and Restoration of the NJDEP Division of Watershed Management. She has worked for the Department of Environmental Protection for 15 years. She has performed plan review for the NJDEP Land Use Regulation Program, the Delaware and Raritan Canal Commission, and municipalities, with a focus on stormwater management. She assisted in the development of the stormwater management rules, and is the coordinator for the Stormwater Best Management Practices Manual. She coordinates with NJDOT, NJDA, and NJDCA on stormwater management issues, and provides guidance and training on the implementation of the stormwater management rules.

Date: **Tuesday, April 25, 2006**

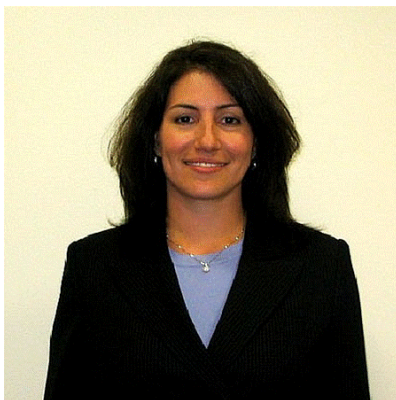
Time: **Reception 5:30, Dinner and Program to follow**
Location: **The Newark Club, One Newark Plaza, Newark, New Jersey**

Cost: **\$55 for ASCE Members, \$65 nonmembers,
\$25 for full time students with ID**

PDH: **One PDH (NYS) approval expected by PIE**

Register: **Register online at: www.branches.asce.org/northjersey or
contact Jim Heeren at jheeren@dewberry.com or
973.739.9400x3203**

PRESIDENT'S ADDRESS



The Branch calendar year may be winding down, but the Branch activities are at the height of the season. With April come many annual seminars hosted by the Technical Groups. The Structural Technical Group and the Transportation Technical Group will both host seminars in the Newark area during the month of April. There really is no better way to get to know the individuals involved than to attend these seminars. The Technical groups year after year raise the bar for topics and this year is no exception. Our K-12 outreach program has a repeat customer this year, the South Street School in Newark. The South Street School has requested the North Jersey Branch to participate in their annual Career Day. Please consider giving some time to participate in this event. The children and teachers are looking forward to our return with our gadgets/treats. Additional details on this and all of the upcoming events can be found in the following pages.

Voting for the 2006-2007 slate of officers occurs this month. We look forward to your enthusiastic participation in this important Branch business. The Annual Awards Dinner location has been finalized. This year the event will be hosted at the Holiday Inn of Totowa, NJ on May 11, 2006. Please note that there is still time to submit nominations for one of the many Branch awards. We look forward to see you at one or all of our many Branch activities this month.

Construction Technical Group Tours Building Project

On Saturday morning, March 25, nearly a dozen members of the reconstituted Construction Technical Group (CTG) met at the Panera Bread shop at Rockaway Townsquare in Rockaway, NJ, to hear a presentation on precast concrete wall panels from representatives of Fabcon Inc., a manufacturer of precast wall panels from Allentown, PA. Robin Brown, Rebecca Hammond and field engineer Jolene Fennema told the participants how the panels are fabricated and installed, and presented technical data related to strength, heat transfer, and material properties of these wall systems. Those attending the presentation learned that precast wall panels are typically more cost effective than concrete masonry units for walls that are over 20 feet high, and costs are approximately \$13 per square foot, depending on local conditions, labor rates and installation difficulty. Although the wall panels can be prefabricated with openings for doors and windows, field conditions may dictate making these openings at the construction site. Once the panels are positioned, they are welded to the steel framework of the building.

After the presentation, the group walked over to the Loew's Theatre that is under construction at Rockaway Townsquare. There, they saw how the wall

panels were being installed. Stephan Butler, who is the project manager for general contractor Stegla Construction, told the group that Fabcon had installed nearly 5,000 square feet of wall panels in four hours on the previous day. Stephan organized the presentation and tour. Fabcon is providing the precast wall panels for this project.

The CTG is planning other activities throughout the year. Contact Steve Denes at 201-307-2548 or sdenes@hertz.com, or Katy Ubinger at 973-667-1600, ext. 112 or at kubinger@csrgroup.com for more information about CTG's planned activities or to be placed on the group's notification list.



Twelfth Annual Transportation Technical Group Seminar

TRANSIT: GET ON BOARD!

Plan It, Build It, Ride It

SPEAKERS/TOPICS:

Arthur Silber, Chief, THE Tunnel Project, NJ Transit
THE Trans Hudson Express Tunnel

T. Roberson Edwards, P.E., Senior Program Manager, NJ Transit
Meadowlands Railroad and Roadway Improvement Project

Vijay Verma, P.E., Construction Manager, NYCT
Paul Scagnelli, P.E., Executive Vice President and Chief Engineer, Schiavone
Construction Co., Inc.

Stuart Lerner, P.E., Partner, Vollmer Associates, LLP
NYCT South Ferry Terminal Project

Fred Bartoli, Project Manager - Transportation, Moynihan Station Development Corp.
Peter Allibone, P.E. – Vice President, SYSTRA Consulting, Inc
The Farley-Moynihan Station Project

Charles “Ty” Dickerson, Senior Program Manager, NJ Transit
Harvey Berliner, P.E., Project Manager, Parsons Brinckerhoff
The Weehawken Tunnel and Bergenline Avenue Station

Charles “Ty” Dickerson, Senior Program Manager, NJ Transit
Stan Gdowski, A.I.A., Manager, Architecture
Hudson Bergen Light Rail Stations

Register: RSVP by April 21, 2006
Register online at <http://branches.asce.org/northjersey> and click
On the RSVP button included in the event flyer
Or send name, telephone number and e-mail address to:
Jean Go at goje@pbworld.com or 973-353-7651

DATE: April 26, 2006

TIME: 2:30 pm Registration Begins
3:00PM Presentations begin, dinner to follow

LOCATION: The Newark Club, One Newark Center, 22nd Floor
Visit www.thenewarkclub.com for directions

COST: \$75 - Members, \$85 – Nonmembers, \$35 Students

PDH: Eligibility for 4 PDH Credits is under review

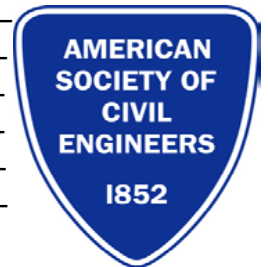
Thanks to Our Premier Sponsors

**BEM Systems, Inc. - Dewberry – DMJM Harris
Edwards & Kelcey – Parsons Brinckerhoff
SYSTRA – Vollmer**

| ASCE North Jersey Branch - 2006 Civil Engineering Awards | |
|---|---|
| Description | Criteria |
| Civil Engineer of the Year Presented to an individual who has contributed substantially to the advancement of the civil engineering profession. | ASCE membership grade of member, fellow, honorary or life member. Member in good standing with the New Jersey Section and North Jersey Branch. |
| Young Civil Engineer of the Year Presented to a young civil engineer who has significantly contributed to the civil engineering profession. | ASCE membership must be at least associate member. Must be 35 years of age or younger as of February 1, 2006. Must be in good standing with New Jersey Section & North Jersey Branch. |
| Service to the People Award Presented to an elected or appointed government official who has contributed substantially to the status of the civil engineering profession by meritorious public service. | Must hold office in a jurisdiction that corresponds to an area within the boundaries of the North Jersey Branch. |
| Educator of the Year Award Presented to an outstanding educator who has contributed substantially to civil engineering through knowledge and guidance. | Must be affiliated with an educational institution located in the State of New Jersey. Institution must support a civil engineering (or civil engineering technology) curriculum |
| Government Civil Engineer of the Year Award Presented to an individual who has contributed substantially to the advancement of the civil engineering profession in the government sector. | ASCE membership grade of member, fellow, honorary or life member. Member in good standing with the New Jersey Section and North Jersey Branch. |
| Excellence in Journalism Award Presented in the name of a journalist or publication that has reported the accomplishments of those persons or in civil engineering. | Journalist or publication is located within OR covers relevant topics within the boundaries of the North Jersey Branch. Advanced public knowledge and understanding of civil engineers. Describes the relevant project or issue and the civil engineer's role in the project. |

Nomination Form

Nomination By: _____
Address: _____
Phone Number & Email: _____
Name of Nominee: _____
Address: _____
Telephone Number: _____
Job Title: _____
Employer/ School: _____



Member of ASCE: yes _____ no _____; If yes, Membership Grade _____

Award(s) Nominated For (list all that apply): _____

Please list academic degrees, involvement in other profession societies, civil or charitable activities, other awards or honors:

Achievement: Please support the candidate's nomination with a brief statement of 200 words or less, on a separate sheet.

Excellence in Journalism Award: Include a copy (original or photocopy) of the article as it appeared in the publication, which should include the publication's masthead and date of publication, article title, publication

Please fax this completed form and attachments to Gareth Middleton at (973) 643-7982 by April 14, 2006
 Additional forms are also available on-line at <http://branches.asce.org/northjersey/>

Official Ballot - North Jersey Branch Officers – 2006/2007

Instructions: In the right-hand column, mark your vote for each office as indicated. Write-in candidates are permitted; eligibility and willingness to serve will be verified. To be valid, ballots must be signed and all information requested at the bottom must be provided.

This ballot must be received on or before April 20, 2006 by the Branch President:

Lamis Malak, P.E., Fax: (973) 338-5860
c/o Dewberry.
200 Broadacres Drive, 4th Floor
Bloomfield, NJ 07003

Indicate Vote Here

President (No Vote Required)
Kenneth Clausen, P.E.

President – Elect (Vote for One Candidate)
Thomas Ott, P.E. _____
Write-In Candidate _____

Vice President (Vote for One Candidate)
Stephan Butler, P.E. _____
Write-In-Candidate _____

Secretary (Vote for One Candidate)
Sandra Pardini, P.E. _____
Write-In-Candidate _____

Treasurer (Vote for One Candidate)
Todd Hay, P.E. _____
Write-In-Candidate _____

Director(s) (Vote for Two Candidates)
Gareth Middleton, P.E. _____
Michael Murno, P.E. _____
Write-In Candidate _____
Write-In Candidate _____

Your Name (Print): _____ **Membership No.** _____

Signature: _____ **Date:** _____

Note: Ballots may also be downloaded from the Branch website.

CAREER DAY VOLUNTEERS NEEDED

This is your last chance! The Newark Public School system is holding a career day and are still seeking volunteers. Volunteers are needed to make a short presentation on the field of Civil Engineering followed by a hands-on activity. The North Jersey Branch will supply activities and materials. If you are interested in participating, please contact Eugenia Roman at eroman@hardesty-hanover.com or 201-656-8810.

Newark Public Schools date:

April 24, 2006

South Street School
 Time: 10 am to 12 Noon
 Sessions: 1 hour sessions
 Class: 4th and 5th grades

ASCE North Jersey Branch 2006 Awards Dinner

Now is the time to recognize those colleagues that have distinguished themselves in the Civil Engineering field.

Every year the North Jersey Branch celebrates individuals that have promoted the Civil Engineering profession through their service and professionalism. The Awards Committee relies greatly on feed back from the Branch members who are in touch with the pulse of the industry.

This year the Branch Awards dinner is scheduled for **Thursday, May 11, 2006** at the Holiday Inn on Route 46 West in Totowa, NJ.

Please take a moment and read through the list of awards displayed on page 4 of this newsletter. The deadline for nominations is April 14. Please contact Gareth Middleton at gmiddleton@tishman.com or (973) 643-4007 if you would like more information.

Creative Solutions for Client Success



299 Cherry Hill Road
 Parsippany, NJ 07054
 Tel.: 973.263.3900
HaleyAldrich.com

- Subsurface Investigations
- Geotechnical Engineering
- Tunnel Design & Construction Management
- Remedial Investigations, Design and Construction
- Directional Drilling Design & Construction
- Environmental Management, Health & Safety

**NORTH JERSEY BRANCH
 TECHNICAL GROUPS**

Join one of these groups and get involved with others in your field. For more information, contact one of the Group leaders listed below.

STRUCTURAL GROUP

Arjuna Ranasinghe – 732-692-1800
arjanasinghe@mccormicktaylor.com

TRANSPORTATION GROUP

Sandra Pardini - 973-353-7665
Pardini@PBWorld.com

WATER RESOURCES GROUP

Ramesh Rajagopal 908-755-0040
rrajagopal@Gfnet.com

ENVIRONMENTAL GROUP

Jim Heeren - 973-739-9400
Jheeren@dewberry.com

PROFESSIONAL ISSUES GROUP

Ronald Gumann – 201-595-4890
rgumann@panynj.gov

CONSTRUCTION GROUP

Co- Chairs:
 Katy Ubinger - 973-667-1600
 Ext.112
kubinger@crsgrp.com and
 Stephen Denes - 201-307-2548
sdenes@hertz.com

GEOTECHNICAL GROUP

Co- Chairs:
 Jay Meegoda – 973-596-2464
meegoda@njit.edu and
 David Lim – 212-608-6600
dlim@hudsonmeridien.com



**PARSONS
 BRINCKERHOFF**

Engineering • Program Management
 Planning • Construction Management

506 Carnegie Center
 2nd Floor
 Princeton, NJ 08540
 609-734-7000
 Richard T. Fisher

Two Gateway Center
 18th Floor
 Newark, NJ 07102
 973-353-9100
 Gregory J. Soriano

For career opportunities in transportation planning, design and construction phase services, please visit www.pbworld.com



Engineers
 Surveyors
 Construction Managers

New Jersey
 New York
 Pennsylvania

- Building Structural Design & Inspection
- Construction Management & Inspection
- Geotechnical Engineering
- Site / Civil Engineering
- Traffic Engineering
- Bridge Inspection
- Bridge Design
- Highway Design
- Railroad Engineering
- Surveying Services

KS Engineers, P.C.
 Corporate Headquarters
 24 Commerce St. • Newark, NJ 07102
 T: 973.623.2999 • F: 973.242.2955
info@kseng.com
www.kseng.com

Employment Opportunities

PMA Consultants

Project Controls Opportunities in New York City & Newark, NJ

PMA Consultants, a program, project and construction management consulting firm has Engineering opportunities in our NYC & Newark, NJ offices for:

Senior Leadership Consultant -The qualified candidate would oversee day-to-day operations of the office, manage project workloads, consult with clients and develop new business. Must have Engineering degree or equivalent and 20+ years experience in construction management, project controls (cost and schedule), and claims avoidance/analysis with experience & established contacts in the NYC construction market. Must have proven communication and leadership skills.

Estimator: The successful candidate must have 10+ years experience in construction, project controls and project estimating (and/or mechanical & electrical estimating). Bachelor's degree in Engineering or related field required.

Senior Scheduling Engineer: The successful candidate must have a 7+ yrs of exp in construction, project controls and scheduling with P3 knowledge and excellent communication skills. B.S. degree in Engineering or equivalent required.

PMA Consultants LLC offers a full benefit package that includes Medical, Dental, Vision, paid time off, holiday pay and 401k.

Visit our website at WWW.pmaconsultants.com. Send resume to HR at jobs@pmaconsultants.com OR fax to 734.663.9561. EOE/AA

LIVE INTERACTIVE WEB SEMINARS

The following are a few of the many web seminars offered through ASCE To see a more complete listing of seminars or to register go to www.asce.org/conted.

- Tuesday, May 2, 2006 ~ 12 Noon - 1:00pm EDT [Snow Load Provisions in ASCE 7-05](#)
- Wednesday, May 3, 2006 ~ 12 Noon - 1:00pm [Quality: What Is It and How Do We Achieve It?](#)
- Tuesday, May 9, 2006 ~ 12 Noon - 1:00pm [Traffic Calming ~Part I](#) *Newly Updated*
- Wednesday, May 10, 2006 ~ 12 Noon - 1:00pm Eastern Time [Making Better Decisions Part I: Numerical Methods for Improved Decision Making](#)
- Tuesday, May 16, 2006 ~ 12 Noon - 1:00pm [Traffic Calming ~Part II](#) *Newly Updated*

Employment Opportunities

SYSTRA Consulting

SYSTRA Consulting is one of the premier railroad and transit design firms in the nation. We have immediate openings in the New Jersey office for engineers and designers who want to work on high-profile transit projects critical to our region.

SYSTRA's diverse portfolio ranges from master plan development to final design and construction management for right-of-way improvements, passenger stations, and maintenance facilities. Our in-house interdisciplinary design team, consisting of planners, architects, and civil, structural, mechanical, industrial, and electrical engineers, provides the full scope of design and management services.

CIVIL/TRACK ENGINEER – Senior Level

The successful candidate for this position will have experience in general civil disciplines such as roadway, sitework, and drainage design. Transit and track design experience is a definite plus. A minimum of 7-10 years of experience, a B.S. in engineering, and strong computer skills are required. A Professional Engineering license is required. This person will lead civil design work corporate wide and be responsible for project management, technical oversight, and mentoring of junior civil/track staff.

CIVIL/TRACK ENGINEER – Junior Level

The successful candidate for this position will have experience in general civil disciplines such as roadway, sitework, and drainage design. The successful candidate will be trained to develop railroad alignments in addition to performing general civil engineering design activities. Track design experience is a definite plus. A minimum of 2-3 years of experience, a B.S. in engineering, and strong computer skills are required including hands-on proficiency with AutoCAD and MicroStation. An E.I.T. is desired.

SYSTRA Consulting offers an opportunity to work in a dynamic and professional environment on exciting projects. Excellent benefits package. E-mail (mcoleman@systrausa.com) or fax (973-893-3131) your resume and salary history. Use job title – (your last name) for subject line. Equal Opportunity Employer, m/f/d/v. Minorities and females are encouraged to apply. Visit our Web site: www.systraconsulting.com.

Dewberry

Civil ♦ Transportation ♦ Traffic ♦ Structural ♦ Geotechnical
 Municipal ♦ Telecommunications ♦ Environmental
 Water Resources ♦ Building Structures ♦ Construction Inspection

Dewberry-Goodkind, Inc.
 200 Broadacres Drive ♦ Bloomfield, NJ 07003 ♦ 973 338.9100
 600 Parsippany Road ♦ Parsippany, NJ 07054 ♦ 973 739.9400
 133 Gaither Drive, Suite T ♦ Mt. Laurel, NJ 08054 ♦ 856 802.0843

www.dewberry.com

HAYWARD BAKER
 Geotechnical Construction

Greg Simmons
 Business Development
 Northeast Regional Office
800-888-4292
 New York Metropolitan Area
201-797-1985

For a complete listing of offices, visit
HaywardBaker.com

♦ FOUNDATION SUPPORT
 ♦ SETTLEMENT CONTROL
 ♦ UNDERPINNING
 ♦ GROUNDWATER CONTAINMENT
 ♦ EXCAVATION STABILIZATION

COMPLETE GROUND MODIFICATION SOLUTIONS AND SERVICES

SPECIALTY FOUNDATION CONTRACTOR

SYS TRA SYSTRA Consulting

Always Moving

- Planning/Alternatives Analysis
- Busways and Alignments
- Systems Engineering
- Facility Design
- Signals & Communications Design
- Operations Analysis
- Construction Management

1515 Broad St., Bloomfield, NJ 07003 | 973.893.6000
 www.systraconsulting.com

Edwards AND Kelcey

ENGINEERS
 ARCHITECTS
 PLANNERS
 CONSTRUCTORS

TRANSPORTATION
 COMMUNICATIONS
 UTILITIES
 INSTITUTIONAL/COMMERCIAL
 FEDERAL
 PLANNING/ENVIRONMENTAL

www.ekcorp.com

REAL WORLD CHALLENGES...
 ...REAL WORLD SOLUTIONS

Offices Nationwide

299 Madison Avenue, PO Box 1936
 Morristown, NJ 07962
 Voice: 973.267.0555
 Fax: 973.267.3555



American Society of Civil Engineers
North Jersey Branch
 Kenneth A. Clausen, P.E., Editor
 KS Engineers, P.C.
 24 Commerce Street, 15th Floor
 Newark, NJ 07102
 (973) 623-2999

UPCOMING EVENTS

April 24: Career Day. South Street School, Newark
April 25: ETG Dinner Seminar Sandra Blick, NJDEP
April 26: Transportation Technical Group Seminar "Transit: Get on Board"
May 5: NJ Section Awards Dinner, Woodbridge Hilton
May 11: North Jersey Branch Awards Dinner, Holiday Inn, Route 46, Totowa, NJ